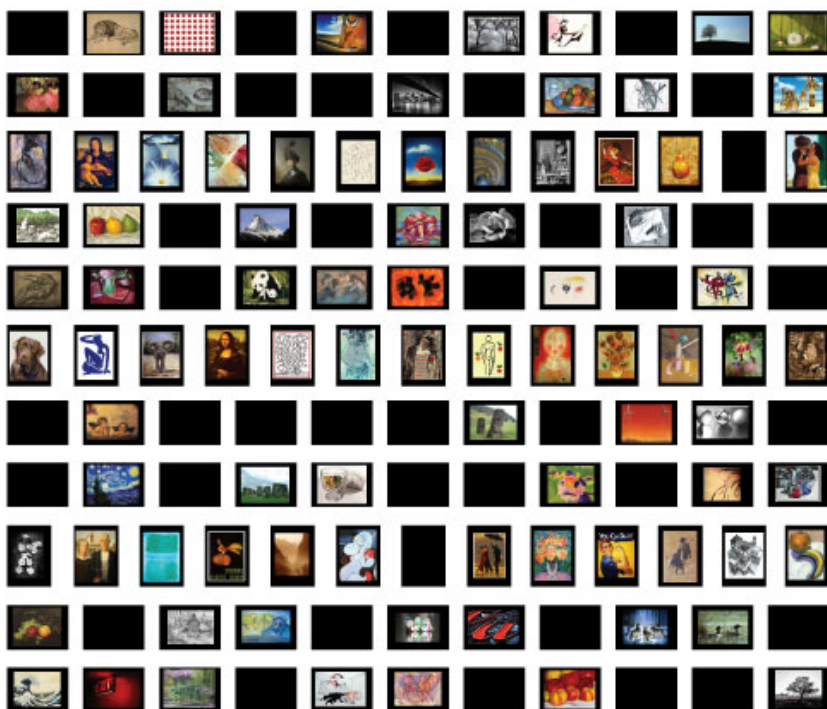


# Imagine

an Entire Wall of Art Making a Positive Difference in a Child's Life



**Art is** something cool, provocative, graceful, trashy, loud, quiet, beautiful, ugly, soft, hard, round, square, big, small, colorful, romantic, cynical, abstract, bland, meaningful, random, predictable, liquid, still, dynamic, spontaneous, unpopular, loved, hated, admired, accepted, ostracized, organized, honest, evasive, open, closed, useful, useless, and so much more...the point is, art is something that is a **part of the individual's perspective.**

## The Cause

### Lending Kids A Helping Hand



Tallahassee 25 is a fully volunteer-driven, non-profit organization that has been helping at-risk youth in the Tallahassee community for more than 12 years.

Our events help kids enjoy their youth while learning principles such as responsibility, self esteem, self discipline, and teamwork.

Our volunteers share a common commitment to help area children.

Our annual fundraiser supports our entire year of events, with the amount we raise determining the number of events we can support.

## The Request

### Artwork Donation to Build Mystery Masterpiece Wall

This year, the event will feature a Mystery Masterpiece Wall that will be exhibited in the largest museum in Tallahassee. The Wall will feature works of art from established artists, aspiring artists, student artists, and the children we work with. Each piece will sell for a flat fee, and all proceeds will go towards our kid's events.

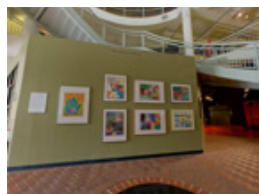
Who: Artists Who Are Willing to Donate to the Cause

**What: Unframed, 5x7 Art Donation**

When: March 14, 2009

Where: The Mary Brogan Museum of Art & Science

Why: Tallahassee 25's Annual Gala Fundraiser



## The Benefit

### Exhibition at a Smithsonian-Associated Museum

With your artwork donation of unframed paintings, photos, illustrations, or graphic design, you will receive the following benefits:

- A tax deductible letter of contribution
- **A new market for your artwork to be seen**
- Your artwork displayed in a renowned museum associated with the Smithsonian Institute
- Your name and contact information on the back of the frame
- Tallahassee 25-provided frame for the buyer's reference
- Your name and contact information listed in the 2009 Gala program
- Your name, contact information, and website link listed on the Tallahassee 25 website
- **The feeling of giving to a great cause!**

Send unframed, 5x7 artwork to Tallahassee 25, c/o April Brown, 3773 Commonwealth Boulevard, Tallahassee FL 32303. Artwork must be received by March 5, 2009. Call 850.459.3119 or email [info@tallahassee25.org](mailto:info@tallahassee25.org) with questions. Thank you for your donation!